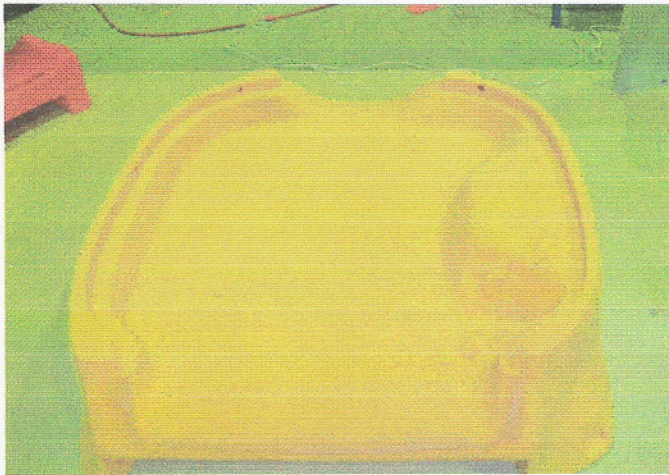


Mushroom Kottage Installation Instructions





Picture 1

The base of the system is placed horizontally on the ground



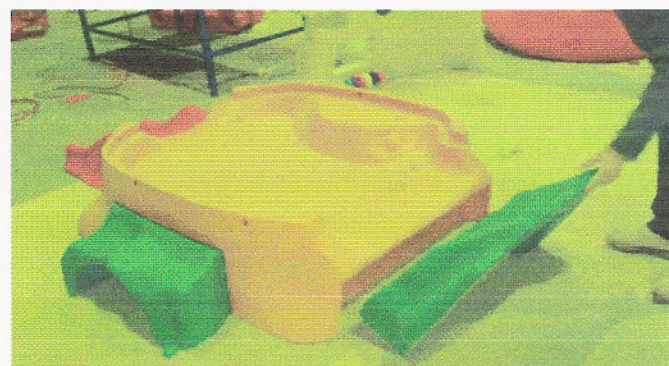
Picture 2

Slightly lift the base and fit the bench to the indent at the right side of the base



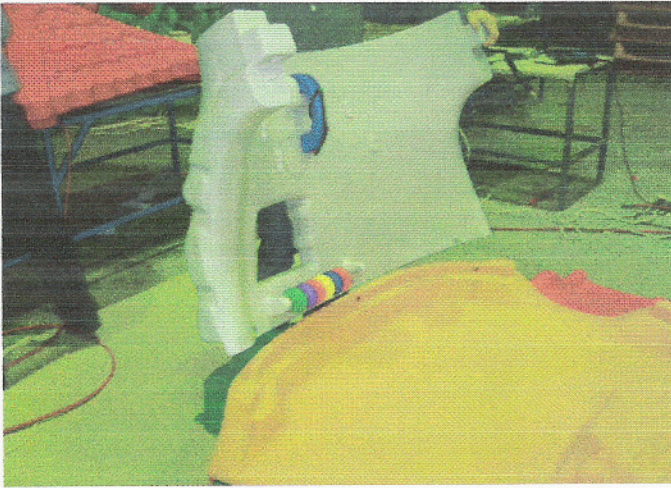
Picture 3

The slide is fitted to the front, just like the bench. The front has a narrower opening than the back



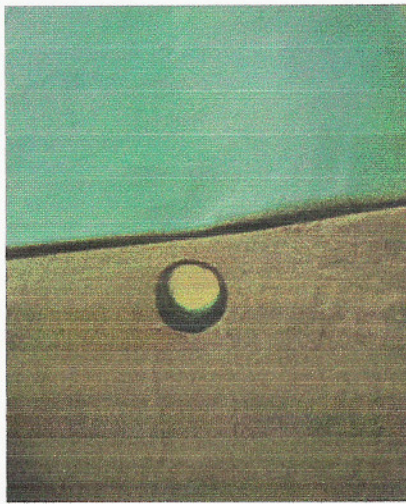
Picture 4

The ramp is fitted to the back, just like the bench and the slide



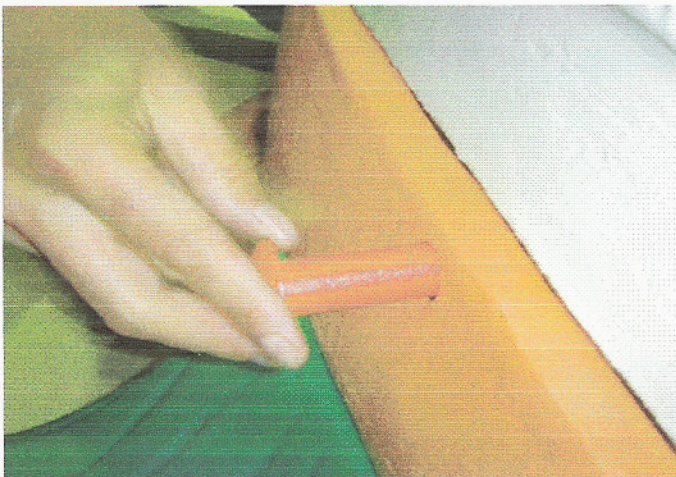
Picture 5

First side wall with the abacus and telephone is placed on the right-side of the base, the right side is the side with the bench



Picture 6

There are 3 holes on each side wall, and 3 corresponding holes on each side of the base. These holes should align



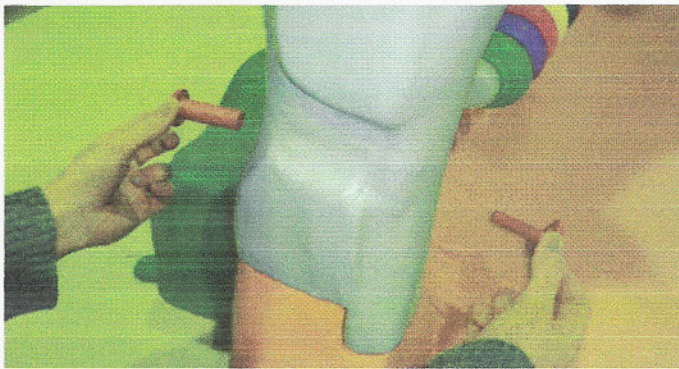
Picture 7

Take a double sided screw, insert the female part to the central hole from the outside



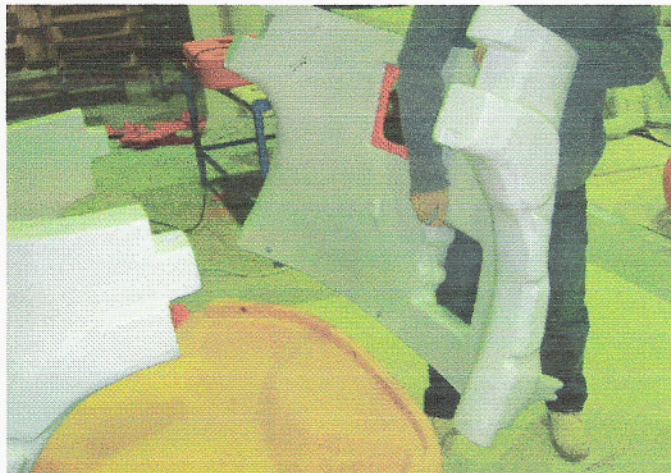
Picture 8

Insert the male part of the double sided screw from the inside. Rotate with hands first, then use the provided allen wrench to tighten. Do not tighten too much as the screw may snatch. Repeat for the other two holes.



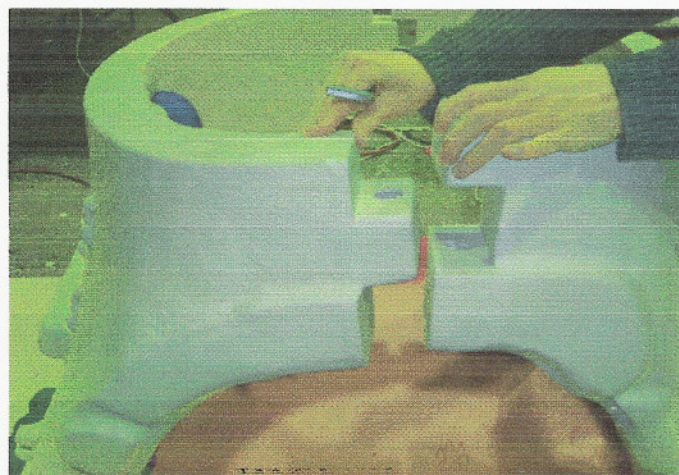
Picture 9

Female and male parts of the screw



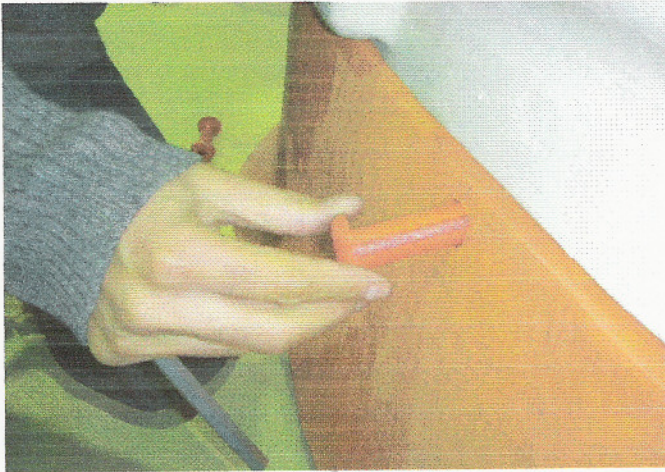
Picture 10

Place the second wall across the first one



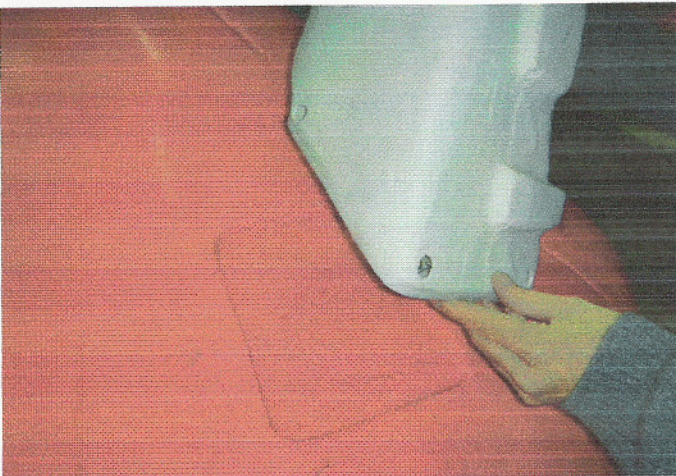
Picture 11

Both walls are combined together at the top



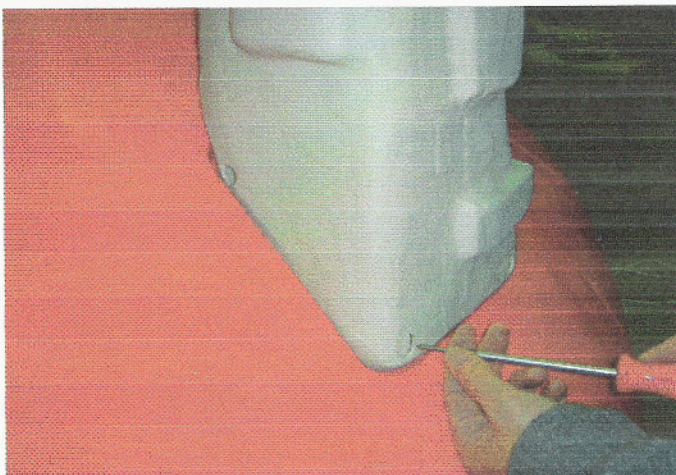
Picture 12

Double sided screw is put on the hole and rotated both sides



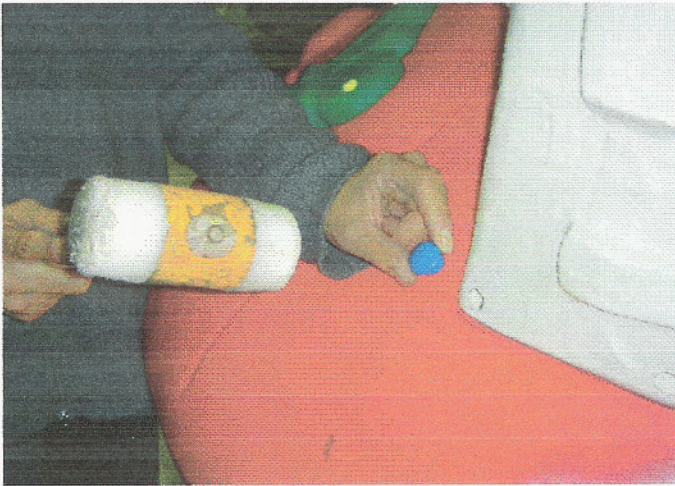
Picture 13

Chimney is placed on the roof as shown in the picture



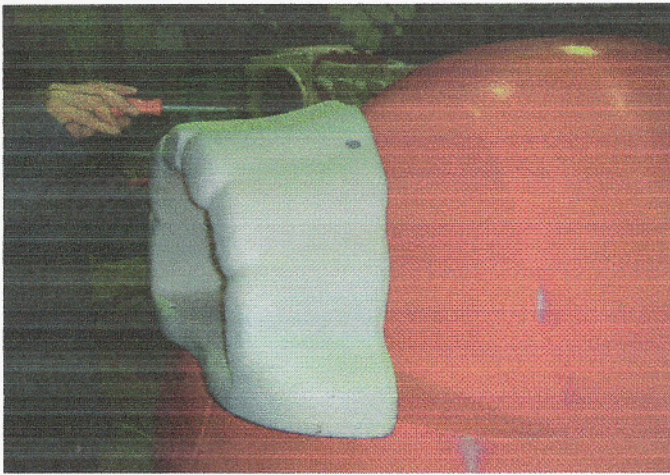
Picture 14

There are 4 holes on the chimney, one metal screw must be screwed in each hole.



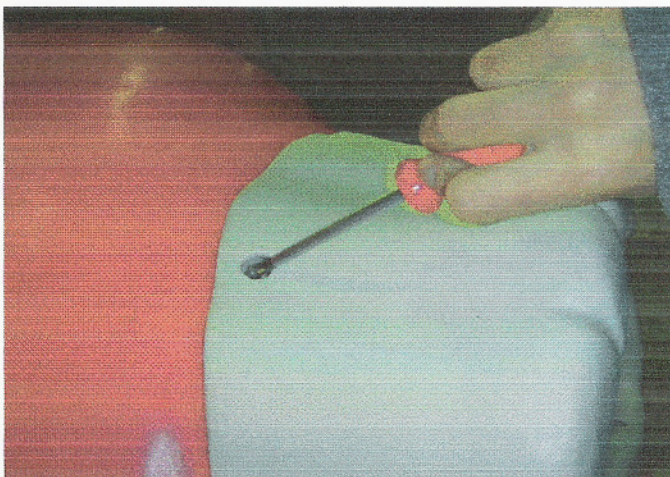
Picture 15

Larger plastic bolt caps (0,3 inch) must be put over the holes to cover them



Picture 16

Window is placed on the roof



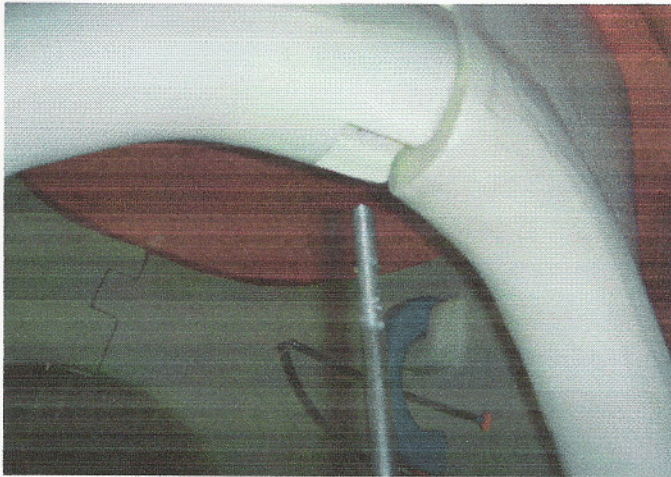
Picture 17

There are 4 holes on the window, one metal screw must be screwed in each hole. Use smaller plastic caps (0,6 inch) to cover the holes



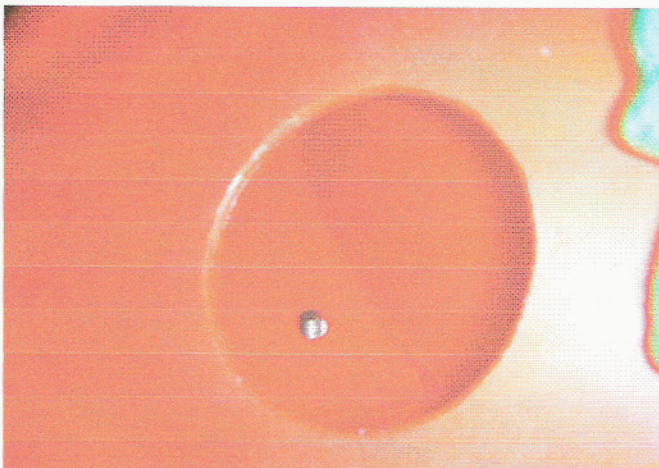
Picture 18

Roof with the chimney and window is placed on the body. The window should face the desk side.



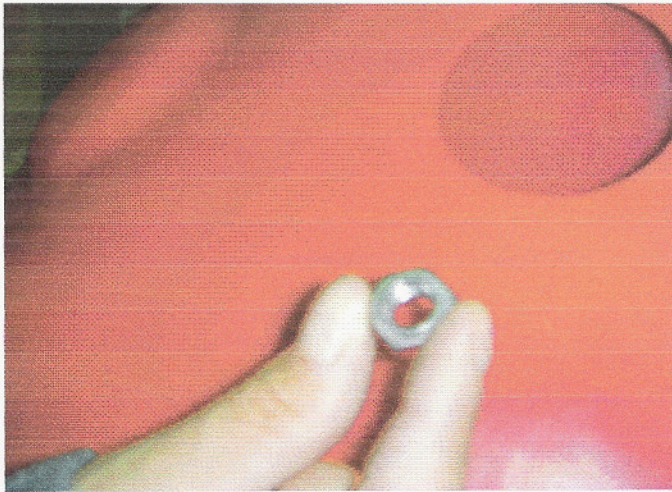
Picture 19

Where the two walls connect there is a hole on each side that allows the 23 cm screw to go through and connect the two walls as well as the roof. Align these holes and insert the screw.



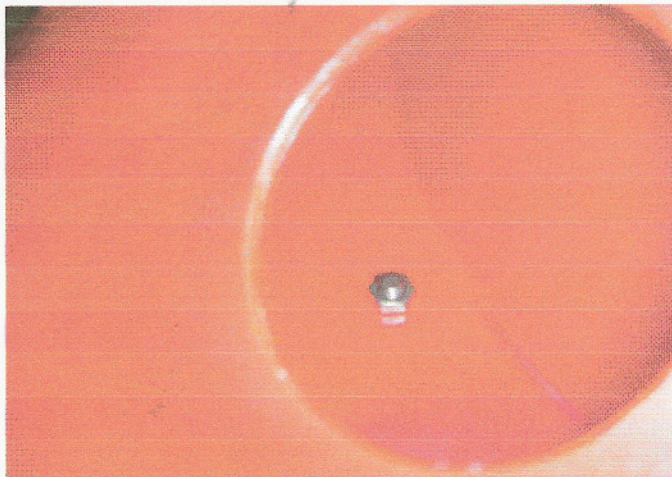
Picture 20

On the roof there is a big round hole where the screw should appear



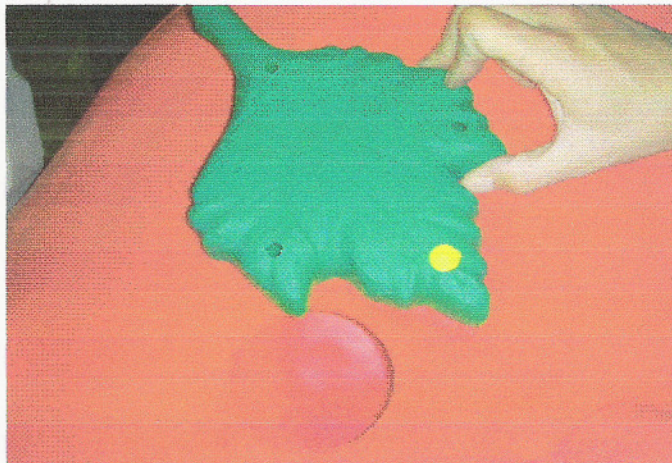
Picture 21

The screw is tightened with the nut. No special tool is needed, just rotate the nut with your hand



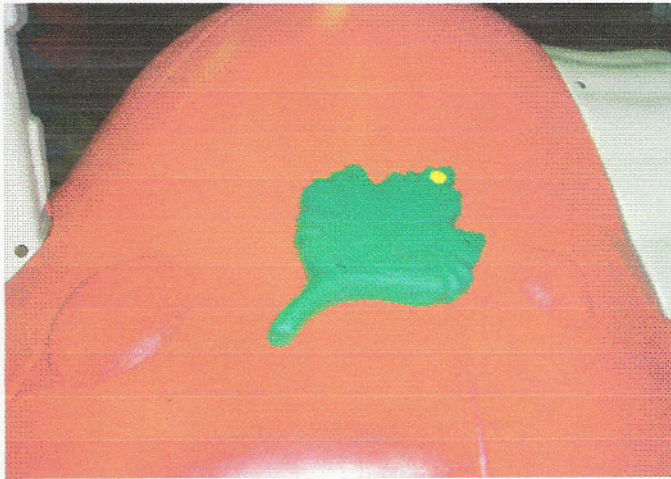
Picture 22

The nut is tightened as shown in the picture



Picture 23

The leaf is rotated to cover the hole. One hole comes screwed already, the other three must be tightened on the roof with the screws, and covered with the smaller bolt caps (0,3 inch)



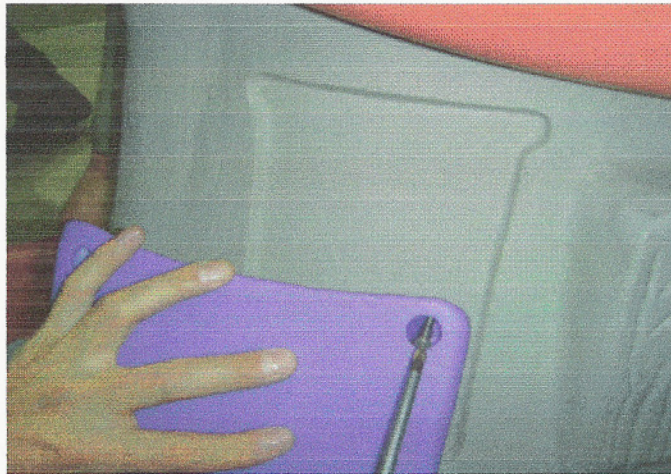
Picture 24

The leaf must look as in the picture



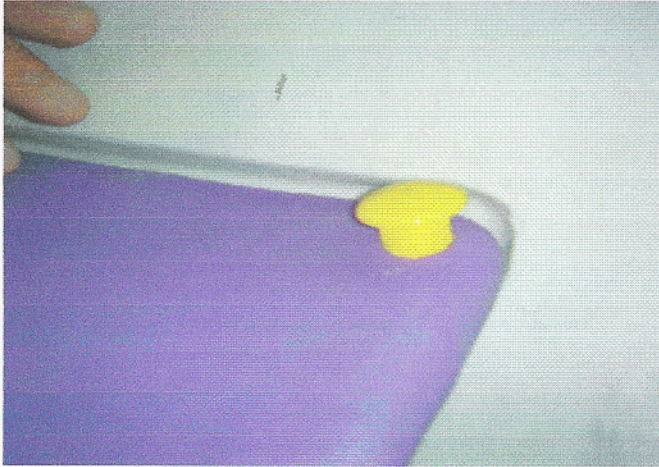
Picture 25

The other side of the walls is connected like the first. This time the hole is covered with the clover leaf. The clover leaf comes already with one screw attached on the roof. The other 3 holes are tightened with the screw and smaller bolt caps are placed on these holes to cover them.



Picture 26

Mailbox must be screwed in its place on the wall.



Picture 27

Screws must be covered with smaller bolt caps (0,3 inch)



Picture 28

Installation is complete